

EQUIP. TYPE P390A/WR EXP. NO.

COL. 540 7871 002

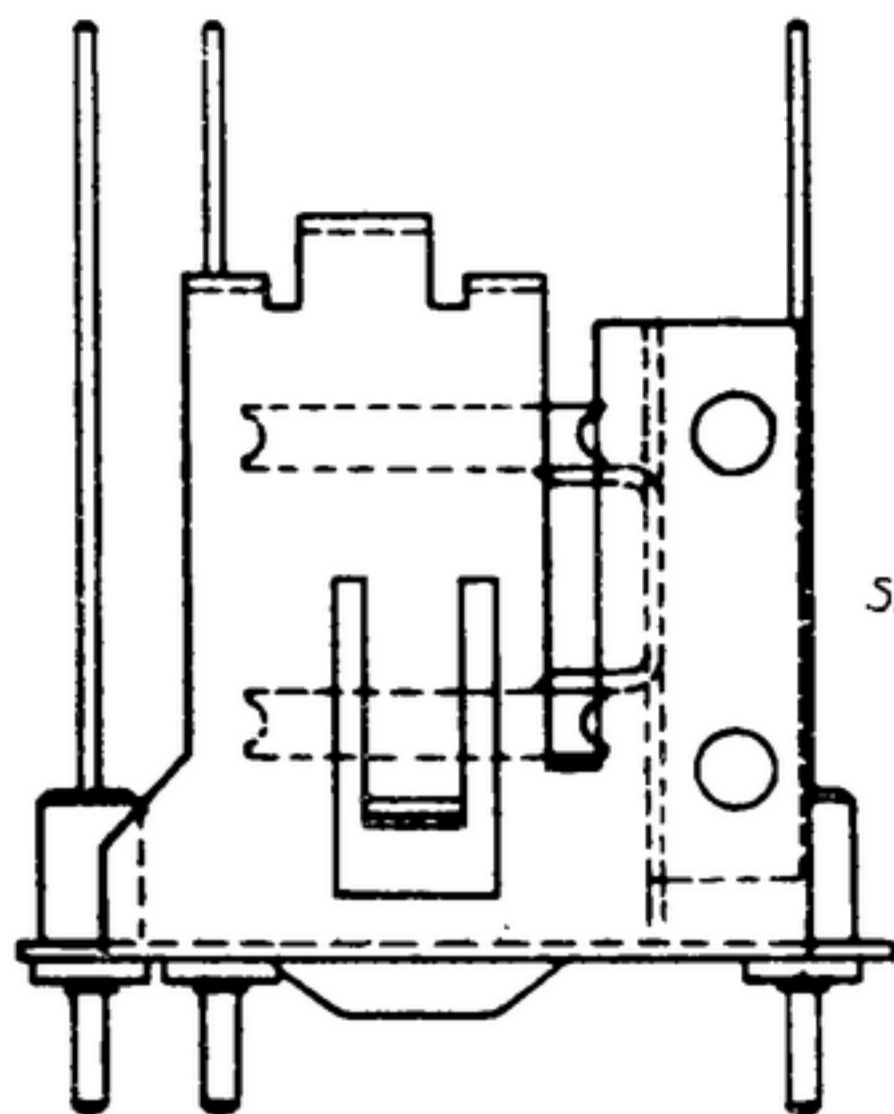
NOTICE: WHEN GOVERNMENT DRAWINGS, SPECIFICATIONS, OR OTHER DATA ARE USED FOR ANY PURPOSE OTHER THAN IN CONNECTION WITH A DEFINITELY RELATED GOVERNMENT PROCUREMENT OPERATION, THE UNITED STATES GOVERNMENT THEREBY INCURS NO RESPONSIBILITY FOR ANY OBLIGATION WHATSOEVER, AND THE FACT THAT THE GOVERNMENT MAY HAVE FORMULATED, FURNISHED, OR IN ANY WAY SUPPLIED THE SAID DRAWINGS, SPECIFICATIONS, OR OTHER DATA IS NOT TO BE REGARDED BY REPLICATOR OR OTHERWISE AS IN ANY MANNER LICENSING THE HOLDER OR ANY OTHER PERSON OR CORPORATION, OR CONVEYING ANY RIGHTS OR PERMISSIONS TO MANUFACTURE, USE, OR SELL ANY PATENTED INVENTION THAT MAY IN ANY WAY BE RELATED THERETO.

THIS DOCUMENT HAS BEEN PURCHASED BY THE GOVERNMENT AND MAY BE REPRODUCED AND USED IN CONNECTION WITH ANY GOVERNMENT PROCUREMENT OR MAINTENANCE OPERATION.

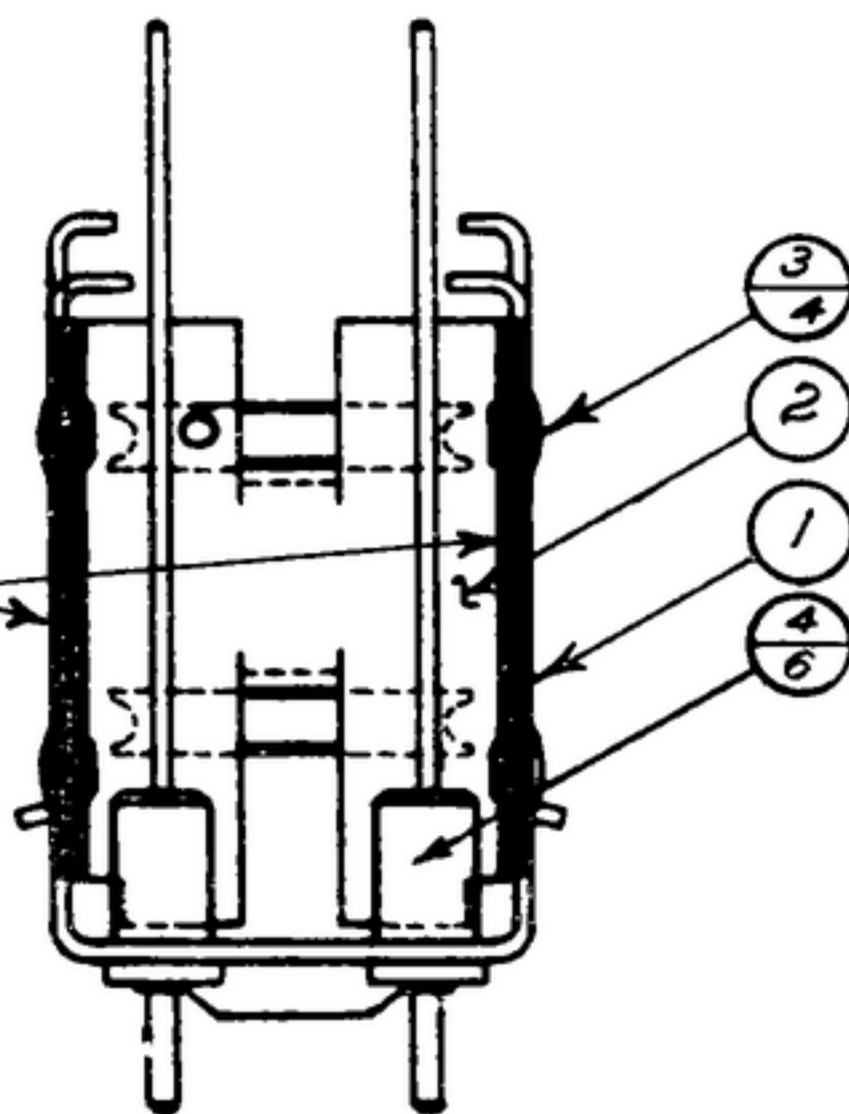
* FOR INFORMATION ONLY. CONTRACTOR MAY AT HIS OPTION DEVIATE FROM THESE PROCESS DETAILS.

REVISIONS

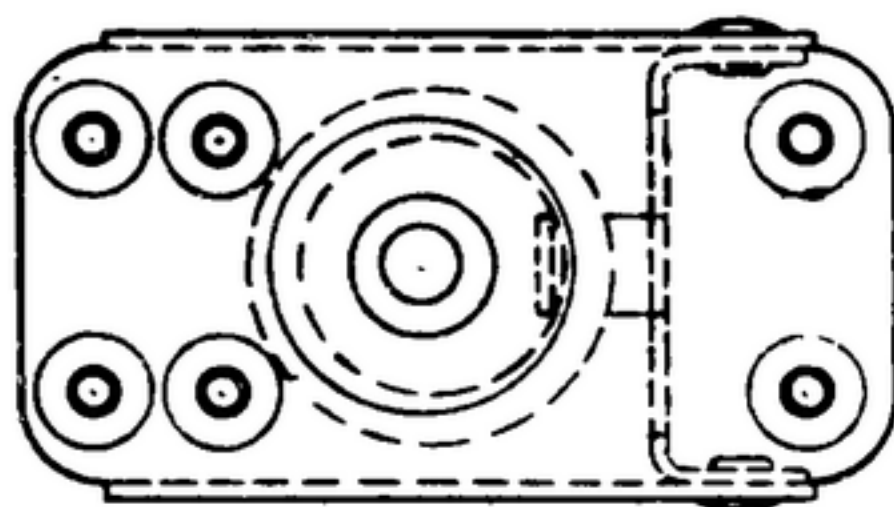
SYM	DESCRIPTION	DATE	APPROVAL
SWE APPROVAL			
SYM PR 10042-12			
B C.A. 34934			
A ₃	A ₁ DELETED VARNISH NOTE 1 A ₂ ITEM 5 WAS VARNISH A ₃ REPLACED COLLINS PART NOS WITH SWE PART NOS	17 NOV 59	42428-PC-59 PME
B	(1) ADDED NOTES 6 & 7 (2) ADDED PT. NO. 05511216-65 & PT. NO. SM-B-249066-1 WAS SM-B-283266-1 & ADDED NOTES 6,7.	9 DEC 60	42428-PC-59 PME



SEE NOTE 2



- (A) NOTES:
- SOLDER EDGE OF FRAME (1) TO LINK (2) AS SHOWN USING COMP. SN 60 WARP. SOLDER PER SPEC QQ-S-571, COMP SN 60 PER SPEC MIL-S-6872.
 - PRESS TERMINALS (4) INTO FRAME (1) AS SHOWN.
 - ASSEMBLE LINK (2) TO FRAME (1) AS SHOWN & ROLL.
 - IN ALL SPLIT BALLOONS TOP FIGURE IS MATERIAL LIST ITEM INDICATOR & BOTTOM FIGURE IS QUANTITY.
 - AS SUPPLIED BY NATIONAL RIVET AND MFG. CO. WAPUN, WIS. PART NO. AB-1-3-ST-MATL TYPE C1006, C1010 OR C1015 STEEL PER FED. SPEC. QQ-W-409 OR EQUAL.
 - FINISH M262 PER SPEC. MIL-F-14072.



A ₂	YOS130317-7	5	As Reqd		SOLDER, SOFT	QQ-S-571	2	
B ₂	05511216-65	3	4	SM-B-249270	TERMINAL-INSULATED			6,7
		2	1	SM-B-249066-1	RIVET-TUBULAR			
				SM-C-249079	LINK ASSY			
A ₃		1	1	SM-C-249077	FRAME-ANT COIL			

LIST OF MATERIAL

COLLINS PART NO. 55B0417002

DRAWN <i>ECS</i>				CHECKED <i>Plan</i>		APPROVED		COLLINS RADIO CO. -SEAR RAPIDS, IOWA- 14214-PH- 51-93		DEPARTMENT OF THE ARMY SIGNAL CORPS ENGINEERING LABORATORIES	
UNLESS OTHERWISE SPECIFIED: DECIMAL DIMENSIONS INCLUDING HOLE SIZES MAY VARY ±.008 FRACTIONAL DIMENSIONS INCLUDING HOLE SIZES MAY VARY ±1/64 MACHINED ANGLES MAY VARY ±1° SHEARED ANGLES MAY VARY ±.25° BROKEN ANGLES MAY VARY ±1° ECCENTRICITY BETWEEN ANY DIAMETERS ON THE SAME CENTERLINE SHALL NOT EXCEED .010 TOTAL INDICATOR READING. ALL DIMENSIONS ARE FINISH DIMENSIONS INCLUDING APPLIED FINISH AND ARE GIVEN IN INCHES.				SIGNAL CORPS		REVIEWED <i>PME</i>		APPROVED <i>HLV</i> <i>PME</i>		FORT MONMOUTH NEW JERSEY	
558-0437-004 + SM-D-249086 SC-DL-248775								FRAME ASSY		SM-B-249066	
APPLICATION				DATE/17 Dec 55		SCALE 2/1					